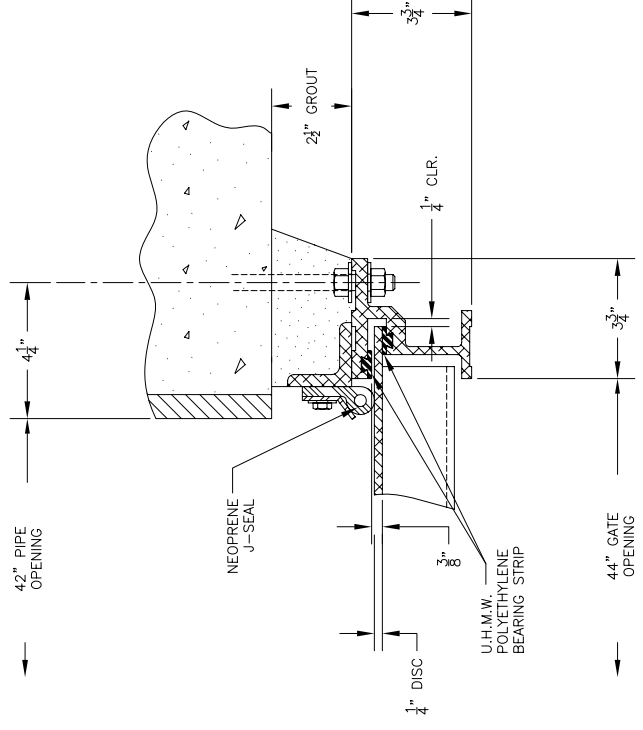
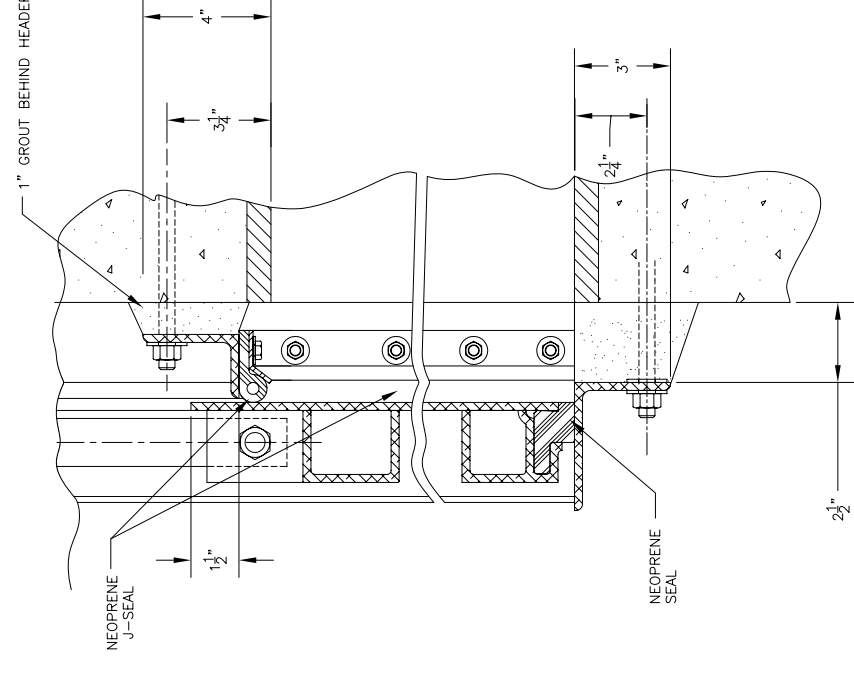
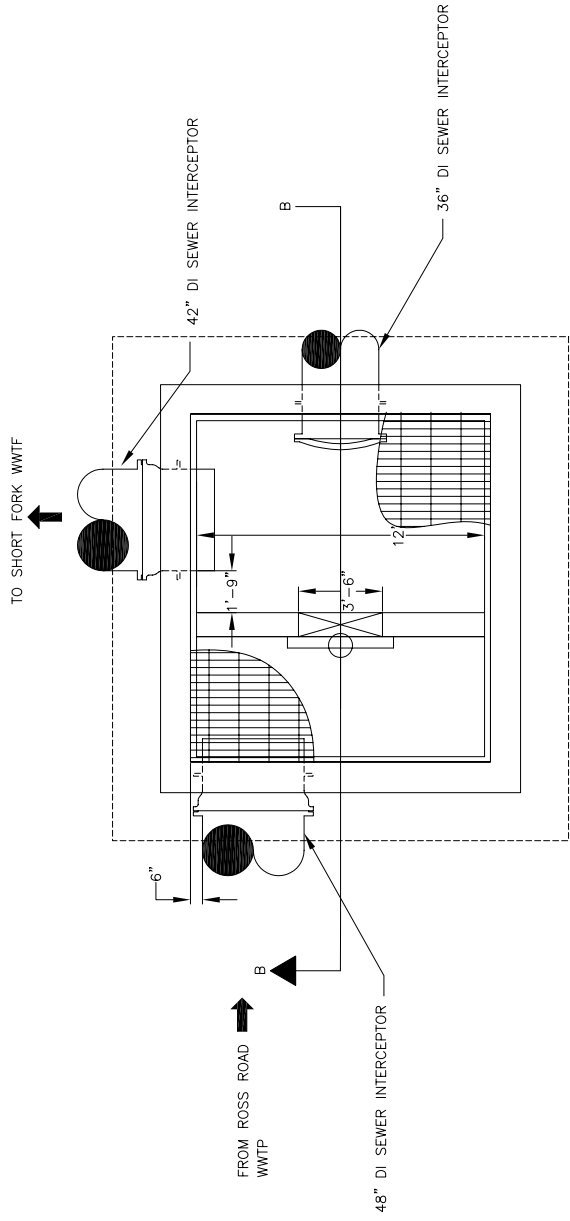


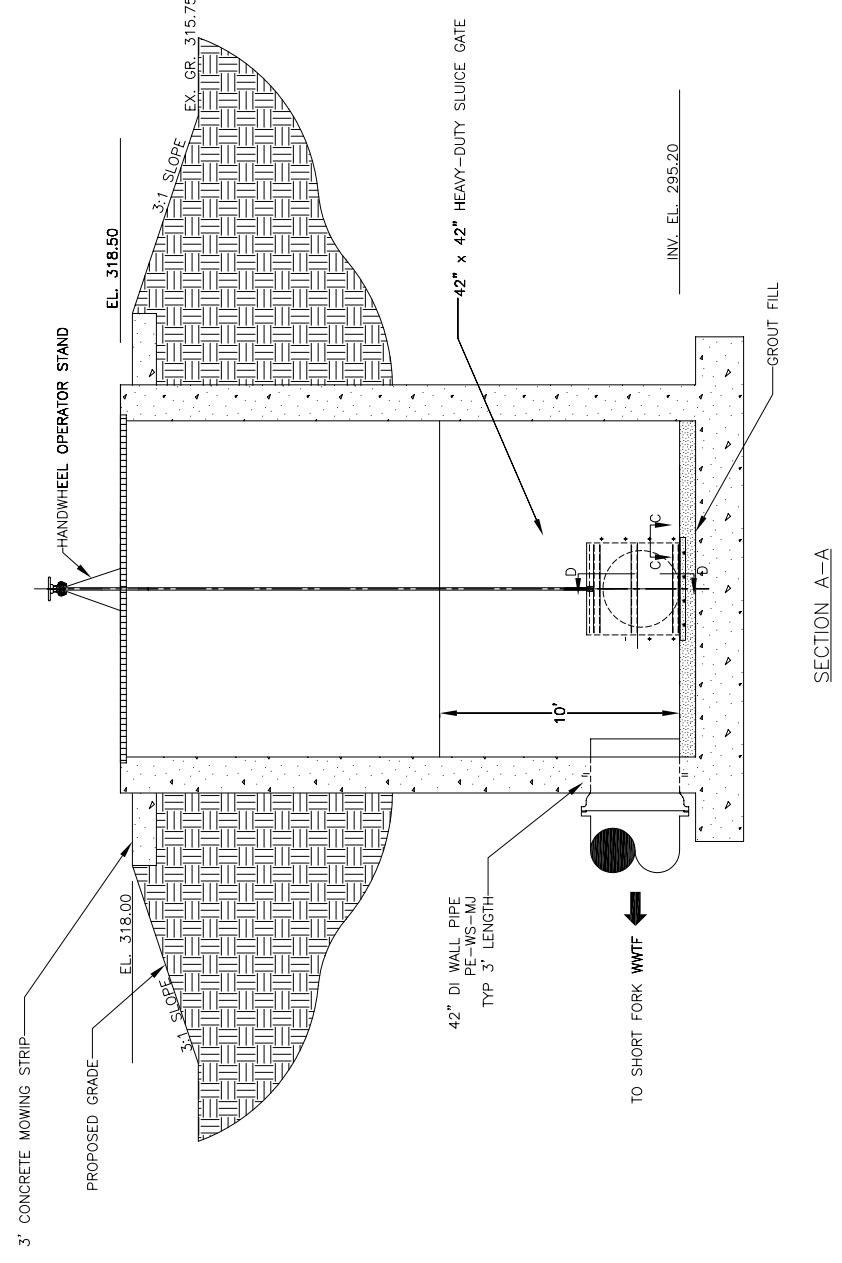
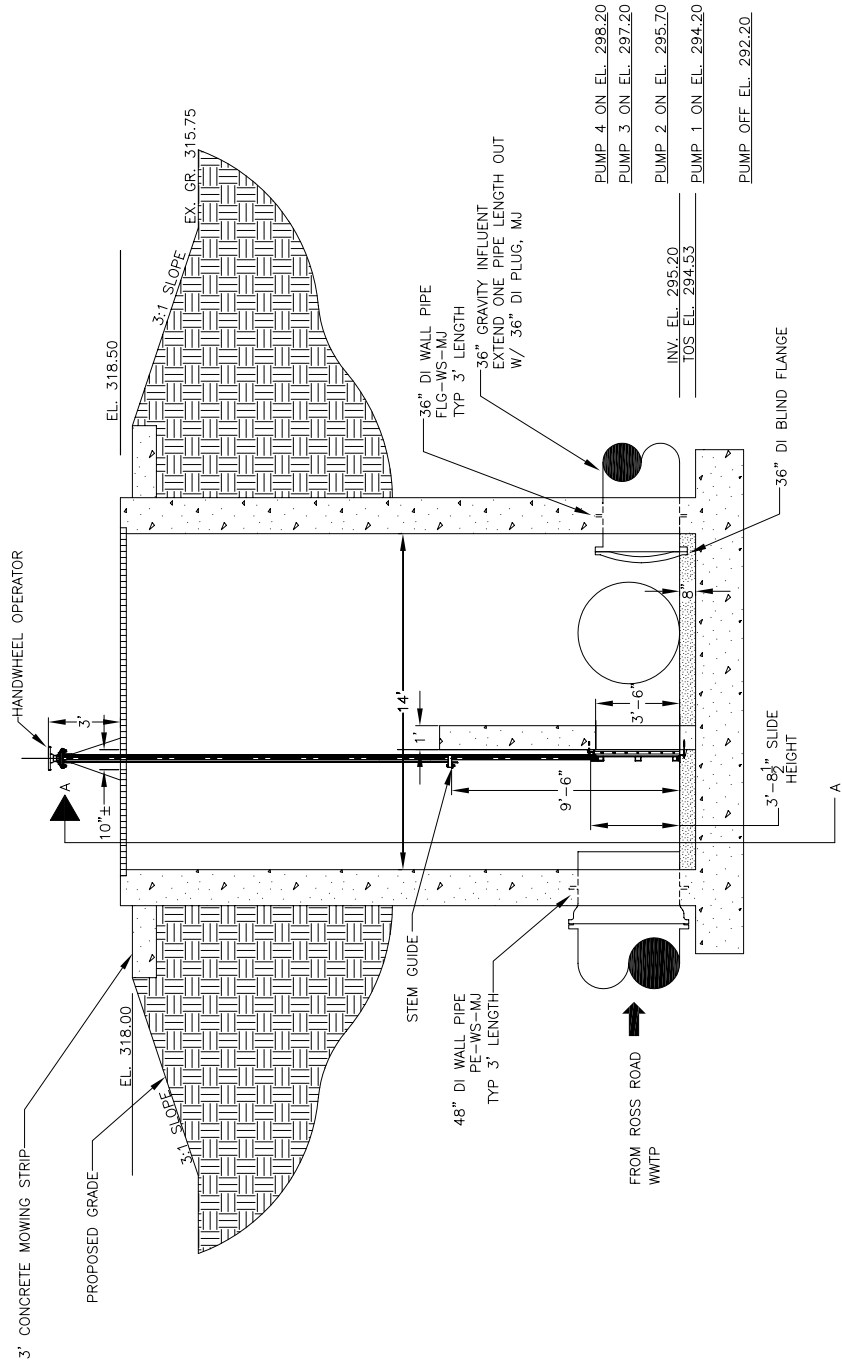
GENERAL NOTE:
 SURFACES IN CONTACT WITH
 CONCRETE TO BE COATED WITH BITUMINOUS
 PAINT, MIN. 4 MILS DFT.



SECTION C-C

SECTION D-D

SCALE: 1"=1'



SECTION A-A

SECTION B-B

NO.	DATE	BY	APP'D	NATURE	REVISIONS

DESIGNED	DATE
TMH	OCTOBER 2003

DRAWN	SCALE
TMH	AS NOTED

CHECKED	JOB NO.
CRH	16535.05



100% SET

DESOTO COUNTY REGIONAL UTILITY AUTHORITY
 UPPER CAMP CREEK INTERCEPTOR NORTH
 DESOTO COUNTY, MISSISSIPPI



ROSS ROAD
 FLOW DIVERSION STRUCTURE

PROJECT NO.	16535.05
CONTRACT	1
SHEET	C3.02